



marylebone w1

The Hanover, 50 Hallam Street



## The Hanover Hallam Street marylebone w1

A truly spectacular penthouse arranged over the third and fourth floors (with lift), with two terraces, in a beautiful Grade II listed building comprising only three lateral apartments. It is finished to the highest specification throughout with outstanding room volumes and proportions.

## Accommodation

Comprising: Grand Entrance Hall • Stunning 40ft x 25ft Reception Room incorporating a Dining Area/ Kitchen • Master Bedroom with Large Walk-in Dressing Room with His and Hers Bathroom En-Suite • Three Further Double Bedrooms • Study • Two Terraces - one leading off the reception and the other off the kitchen Shower Room • Guest WC

## Amenities

Entry Phone • Porter • Handcut Inlaid Marble Floors to Entrance Hall • Cabled throughout to allow installation of 'Crestron' Home Automation with 'Apple iPad' Controllers Bespoke Sweeping Sculptural Staircase CCTV Security with Recorded Monitoring • High – Specification Intruder Alarm (NACOSS/NSI Standards) with Motion Vibration and Shock Detection • Bespoke Kitchen with Backlit Hand Picked Marble Counter Tops and Bespoke Exotic Wood Veneered Joinery by the Finest Cabinet Makers



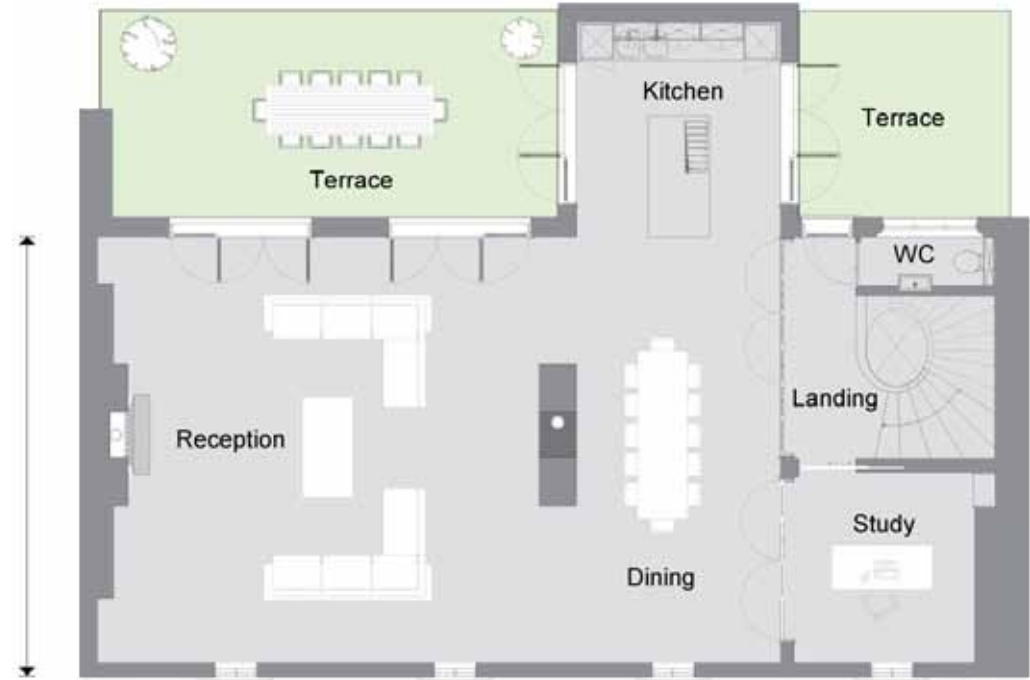


Third Floor

Internal Area: 3,389 sq ft (315 sq m)

Terrace: 485 sq ft (45 sq m)

Total Area: 3,874 sq ft (360 sq m)



Fourth Floor

999 Years Leasehold with a Share of Freehold

£7,950,000 STC

**DRUCE**

61 Weymouth Street, London W1G 8NR

**020 7935 6535**

**www.druce.com**



**IMPORTANT NOTICE**

Druce Residential ask anyone who may read the attached particulars to also consider the following:-

- i) These particulars and the contents herein are given in good faith but should not be relied upon as being part of a statement or representation of fact and do not constitute, nor constitute part of, any offer or contract.
- ii) They are prepared for the guidance only of prospective purchasers and represent the opinion of the Author and are given as a fair overall description of the property but are not intended to constitute part of any offer or contract.
- iii) No services or facilities have been tested and therefore potential purchasers should employ an expert should they wish to seek confirmation that they are in working order.
- iv) Should a photograph appear on these particulars it will depict only certain parts and aspects of the property at the time when the photograph was taken. Needless to say, this may change over a period of time.